

WILDLIFE REHABILITATION IRELAND
Annual Report



For the period ended
31st December 2022

--

Contents

Company information	3
Director’s report	4
Mission Statement	5
WRI activities	6 - 20
Audited accounts 2022 & Financial statements	21 -22
Acknowledgements to funders	23

--

Company information

DIRECTORS

Heidi Bedell (Chairperson to 7.5.2022)
Aidan Lynch (Chairperson)
Sharon Murphy (Company Secretary)
Pat Nolan (Treasurer to 21.1.2022)
Ciaran Fitzgibbon (Treasurer)
Emma Higgs
David Duffy
June Stanley (to 20.1.2022)
Michael Gunn
Sean Conlon
Ciaran Brennan

COMPANY NUMBER

555237

CHARITY NUMBER

20991

REGISTERED CHARITY NUMBER

20142551

REGISTERED OFFICE

10 High Meadows,
Duleek,
Co Meath, Ireland
Tel: +353 (0)41 9880663

AUDITOR

Mark Muir (ACA)

--

Director's Report

Dear Staff, Volunteers and Supporters,

It is with great pleasure that I present to you the Annual Report for the year 2022. As we reflect on the past year's achievements, challenges, and milestones, we recognise the resilience and dedication of our entire organisation in navigating through a complex and ever-changing landscape.

We continued to promote diversity and inclusion, supporting the communities in which we operate and in 2022 we were delighted to visit and chat with the teenagers at Oberstown Detention Centre. This relationship continues, as does our relationship with local Primary and Secondary schools.

I would like to express my deepest gratitude to our volunteers for their unwavering support, dedication, and trust. Our achievements would not have been possible without their commitment and contributions. I would also like to extend my appreciation to the rest of our board and to our supporters for their loyalty and partnership.

Looking ahead, we remain optimistic about the future. While we anticipate ongoing challenges and uncertainties, we are confident in our ability to adapt and thrive. Together, we have built a strong organisation, and I am excited about the opportunities that lie ahead.

--

Mission Statement

Wildlife Rehabilitation Ireland was established to:

- support, extend and improve wildlife rehabilitation resources in Ireland;
- promote awareness and education about Irish wildlife for the general public and for professionals working in this and adjacent fields;
- take any other action that will improve wildlife welfare and conservation in Ireland.

These aims were successfully worked towards during 2022 under various strategies as described below:

Wildlife Hospital Update

Education, Awareness Raising & Outreach

Strategic partners, alliances, bodies, stakeholders

Wildlife Crime Prevention

Communications and Media

Governance, Staff & Volunteers

Financial Statements

Grants & Acknowledgements

Wildlife Hospital Update



Relocation Jan 2022

WRI moved to our new site at Mornington in Jan 2022. We planned to lease temporarily while fundraising to buy and build on 5 acres of the 37 acre site.

The Move

Our volunteers ferried trailer loads of equipment and gradually moved all our equipment from Garlow Cross to Mornington.

Without the help of volunteers old and new, this mammoth task would not have been possible. Tradespeople again provided their services in order to get the facility up and running.



Wildlife Casualties

Despite the relocation of the Wildlife Hospital to Mornington, we continued to care for 4 otters. Our ongoing partnership with Baron Randal Plunkett offered us the opportunity to create an extensive wildling up area in Dunsany Nature Reserve.



We also transferred four hedgehogs, two of which were released to the site where they were found, soon after our arrival at Mornington. The other two were transferred into the care of Drogheda Animal Rescue.

Interim Hospital

We were under pressure to have our next interim Hospital functional for the Spring orphan season so we worked extremely hard and managed to create our second interim Hospital by March 2022.



Groundworks were carried out, our portacabins were transported to the site, donated scaffolding planks were used to convert driving range bays into a storage barn for the enormous amount of equipment that is needed to run a Wildlife Hospital.

Cladding was used to convert more driving range bays into wildlife outdoor runs/cages.



Facilities

Nature Education Centre

A Nature Education Centre was created in one of the cabins with the intention of welcoming small groups for talks.



Triage/Vet Cabin

The triage / vet cabin was set up and equipped with basic diagnostic equipment, such as stethoscopes, thermometers, treatment supplies and medications.



Intensive Care Unit & High Dependency Units

These cabins are equipped to provide a range of specialised medical treatments and therapies, such as intravenous fluid therapy, pain management, nutritional support, and administration of medications and antibiotics.

Isolation Units

Isolation units were created with the aim of preventing the spread of infectious diseases from incoming to existing wildlife casualties. These units would have strict biosecurity protocols including foot baths, the use of PPE, and access would be restricted to authorised personnel only.



Veterinary Protocols

WRI brought over Veterinary Nurse Aneesa Malik (MSc, BSc (Hons), RVN, Cert VNES, Cert VNECC) to work with us on creating international best practice procedures and protocols based on her experience in London Vet College and involvement in charity, emergency, referral, exotics and British wildlife.



Construction work 2022

Our Maintenance Manager worked extraordinarily hard throughout the year transforming the derelict site into another interim Wildlife Hospital at the same time as deconstructing the large outdoor enclosures from the previous site in Garlow Cross.



A huge storage shed was built, compost area constructed, the vandalised house cleaned and renovated, cabins adapted to be fit for purpose for housing and treatment of wildlife casualties.

A huge and diverse collection of wildlife boxes and feeders were built, including an instructional video on how to build a bird box for National Heritage Week 2022.



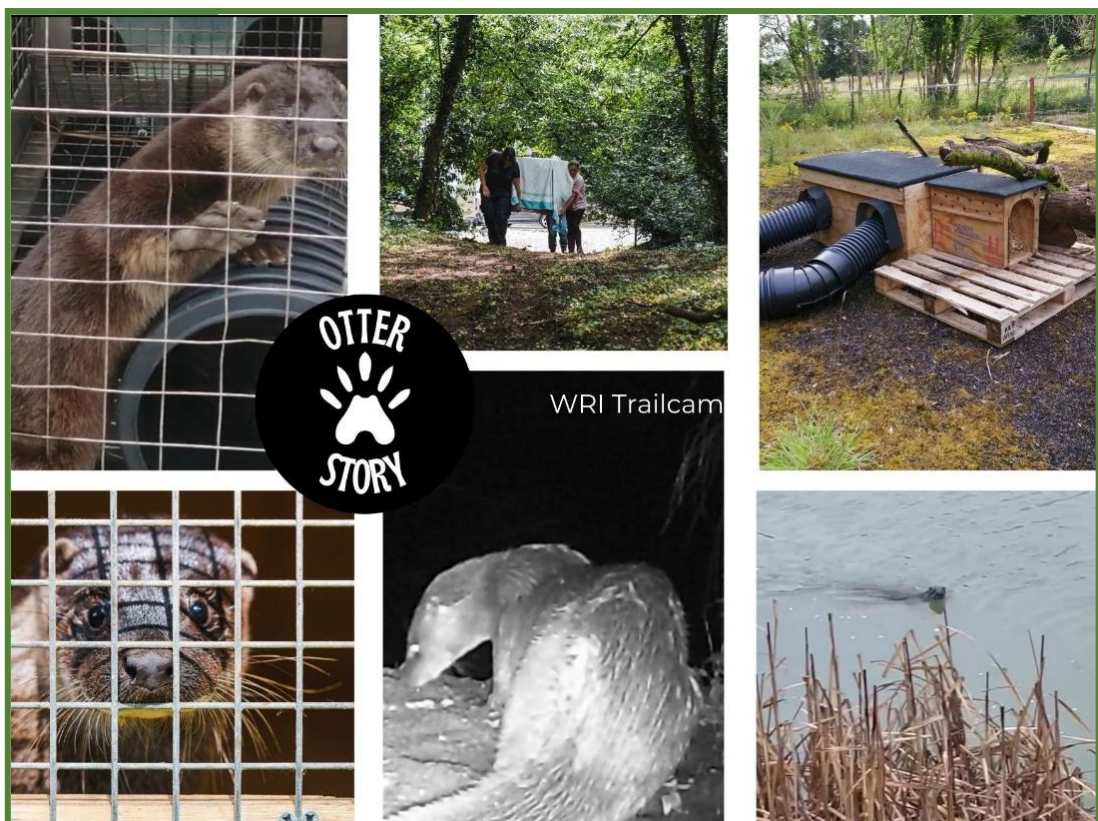
Maintenance was also required for the remaining patients we had in our care - the four otters at Dunsany Nature Reserve. The security fencing around the otters' enclosure needed constant attention, the animals needed to be fed and cleaned out, enrichment found (branches, seaweed), or made (plunge pool!) and then the exciting but labour intensive construction of soft release enclosures for the otters to return to their various sites of origin – Dublin, Meath and Wexford.



Farming - Mealworms

One of our volunteers started a mealworm farm so we could grow our own 'food' – mealworms, to feed to some of our wildlife casualties – birds, bats, and hedgehogs. They are an expensive food item and growing them also enables us to supply other rehabilitators with excess worms.

An Otter's tale..



Challenges

WRI was faced with some serious challenges in 2022, some of which currently remain.



Planning challenges

Many of the challenges of 2021 have followed us into 2022.

We held a public information meeting for the purpose of meeting the local residents, explaining our plans and opportunities for collaboration, and addressing any potential concerns about the hospital project. We felt this was well received at the time.

We explained that due to the exceptional circumstances we faced, i.e.; having to re-locate the Wildlife Hospital within three months, with the aim of being able to assist with the rehabilitation of wildlife in the busiest season – Spring, we were applying retrospectively for planning permission.

Being made aware of some discontent among a few neighbours WRI launched a postcard campaign encouraging people to inform Meath County Council of their support for a Wildlife Hospital in Mornington. The quantity and quality of letters of support from this campaign were overwhelmingly positive and encouraging and we want to thank all who took the time to put pen to paper.



However, despite having set up a fully equipped new interim Wildlife Hospital at our new location in Mornington, Meath County Council concluded they could not make a decision regarding our application for retention of our portable cabins, which effectively amounted to a refusal.

This response prohibited us by law from rescuing injured wildlife at this site until our planning status had been regularised.

In the meantime, once again, the rehabilitators nationwide are continuing to operate as best they can with limited resources.



To address these planning challenges we contacted multiple relevant stakeholders, legal advisors and local and national politicians many of whom visited the site, were sympathetic, but unsuccessful in their attempts to help us regularise our situation.

Location challenges

Due to our limited resources and time constraints, we were unable to pursue an appeal and so found ourselves, yet again looking for a new permanent home for the much needed Wildlife Hospital.

Our requirements are quite specific so this has not been an easy task but we are confident the right site is out there and we will continue to look until we find one that fulfils our requirements.

Wildlife Hospital Site Parameters	
Ideal Site Parameters	Unsuitable Site Parameters
<ul style="list-style-type: none"> Location: Co Meath / Louth / North Co Dublin Max 25 mins drive from Dublin, Co Meath Size: 5 acres minimum, ideally 10-15 Context: Edge of village / greenfield Access: Wheel mode (Car, bikes, shuttle/bus (public transport)) Services: Main sewage (or septic tank), electricity, mains water (or well), internet access Building: House on site (walk in / derelict) Outbuildings: Barns / stables / kennels Yard: Min 1 acre hardstanding, ideally concrete Freshwater Zoning: Not unfavourable zoning Planning: Full or lapad planning permission Facilities: Social facilities / shops (within 3-5km) Ambience: Green / wild / natural / quiet / natural screening Eco Assets: Ideally adjacent to woodland / stream 	<ul style="list-style-type: none"> Previously contaminated Near wind turbines Poor entry access / sightlines etc. Excessively poor drainage Proned to flooding Adjacent to known conservation (via a wildlife) neighbours Adjacent to an SAC / SPA Adjacent to poultry farm / large lake Adjacent to noisy neighbours (e.g. dog kennels)



Funding challenges

While we had budgeted to rebuild a Wildlife Hospital in Mornington, additional costs due to planning process delays were considerable. Fundraising remained ongoing and grant bodies continued to provide support albeit limited due to lack of site security.

In 2021 nearly three quarters of our funding came from donations to help with the expenses incurred with the rehabilitation of wildlife casualties. While we are prohibited from taking in animals this source of funding is no longer available but running cost expenses are still incurred.

Overcoming these funding challenges requires proactive strategies such as diversifying funding sources, building strong relationships with donors, engaging in effective fundraising and marketing efforts, and demonstrating the impact and value of the work of WRI. Additionally, exploring partnerships, collaborations, and exploring new revenue streams can help us mitigate funding challenges and achieve long-term sustainability.

In Autumn 2022 we were extremely fortunate to meet a philanthropist with a passion for wildlife who has committed significant funding towards our Wildlife Hospital project which will enable us to secure a permanent site when we find a suitable location.

Education, Awareness Raising & Outreach

WRI put a large emphasis on educational events in 2022

Schools & Universities



School talks

Wildlife talks were provided to a variety of schools:

Santa Sabina School

Scoil Bhreadain Feasa (at the tree planting day)

Drogheda Grammar School

An Taisce Green Schools webinar 25th May 2022

Sonairte Wild Ways Talks x 4

Wildlife in University College Dublin Veterinary Hospital



In September 2022 WRI provided final year veterinary nursing students in UCD's veterinary hospital with training in Wildlife treatment and first aid. This is now a compulsory part of their curriculum and an essential part of veterinary education due to the inevitability of wildlife casualties being brought into practices nationwide.

Many thanks to our Instructor Lilian Collier RVN.

Conferences & Courses



Wildlife Crime & Conservation Conference 2022

21st August 2022

This was a very successful networking and meeting of minds event, bringing together groups and individuals invested in the protection of wildlife and nature, the conference delivered new ideas as well as interesting statistics and some hands-on work in the practical sessions.

Talks were provided by speakers including Paddy Woodsworth, Superintendent Martin Walker, UK Vet Liz Mullineaux, Baron Randal Plunkett, and Michael Ewing



Vet Course

19th and 20th August 2022

Held in Coláiste na hInse, Bettystown, this two day course introduced veterinary professionals to advanced wildlife care techniques from three International experts. With theory and practice sessions, the delegates were given the knowledge to provide more than just first aid treatment to wildlife casualties when they arrive at their clinic.

This course was awarded 23 CVE credits by the Veterinary Association of Ireland.



IVNA Symposium

19th and 20th August, Tullamore

WRI together with veterinary surgeon Kieran & veterinary nurse Aneesa, provided a wildlife first aid practical session for veterinary nurses from all over Ireland who were attending the Irish Veterinary Nursing Association Symposium.

There was a good level of interest as wild animals are frequently brought into veterinary clinics by the general public, and mainly the vet nurse will be the first on scene and expected to know how to provide first aid.

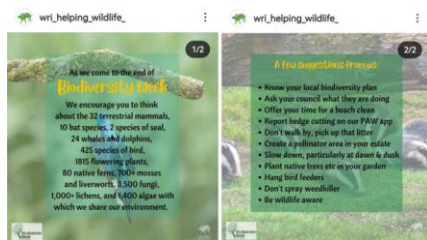


Online presentations

Vincent Wildlife Trust Symposium

WRI were invited to speak on this webinar about our experience with pine martens. We presented a talk about rehabilitating pine martens including the types of injuries we saw them present with, treatments, feeding, enclosures, release and some general statistics.

Awareness Raising - Biodiversity



Biodiversity week

Social media

Utilising our social media platforms, we promoted Biodiversity Week with information about the numerous animals, plants etc. we share our environment with, as well as tips on how to introduce more biodiversity.



Heritage week

Sonairte Wild Ways Talks

We held a number of family workshops throughout the summer at Sonairte Ecology Centre, with one special workshop during Heritage week, with a wildlife café, fox clay modelling and a wildlife discovery trail.



Litter picking

Mornington estuary

Our small team regularly cleans up the estuary area. The volume of rubbish washed into this Special Area of Conservation is distressing.

After only a few hours of litter picking c. 30 bags of rubbish are collected.



Tree planting

Scoil Bhreadain Feasa & Reforest Nation

WRI invited a local primary school, Scoil An Bhreadain Feasa, and secondary school Coláiste na hInse to join us in a tree planting day with Reforest Nation at the Mornington site. It was a great opportunity to chat with the students about the importance of nature and all that lives in it.



Bord Bia Bloom

Phoenix Park, Dublin

WRI were stall holders at Bloom in the Phoenix Park over the June bank holiday. Situated in the Conservation Zone with fellow conservation charities, we met hundreds of attendees, held clay modelling workshops, wildlife art workshops, rewilding talks and much more.

Many thanks to the WRI team of volunteers who set up and manned the stall, and a special thanks to wildlife artist and illustrator Aga Grandowicz and Baron Randal Plunkett for their contributions.

Educational Activities 2022



Community Outreach



Wellness Day

On Sunday 8th May, 2022 WRI hosted a day of wellbeing in the grounds of Rosemount Estate, Co Meath.

The privately owned gardens with the river Nanny flowing through became the venue for a range of local practitioners in therapeutic sound baths, yoga and meditation.

In addition, there was a vegan food stall and WRI merchandise along with a raffle with wonderful prizes donated by the wellness community and local businesses.

The event was successful as a publicity and networking day as well as raising c €3000.



Drogheda Cottage Market

On Saturday 4th June, WRI manned a stall in this local market. We applied as the monthly charity and were lucky enough to get picked.

It was a busy day of selling and explaining who we are and what we aim to achieve. As always, we promoted the mission statement and tools WRI have created to help Irish wildlife – websites, literature and an App.



Drogheda Christmas Cottage Market - Go Wild with WRI

On Sunday 11th December WRI created a wild space in the Christmas market. We filled our stall with handmade boxes for birds, hedgehogs, bats and squirrels. The public were interested in our taxidermy display and we sold approximately €800 of products.

Most importantly we spent the day showing people the value and necessity of returning their own gardens to nature, no matter how small.



Highfield's Vet Surgery open day

Navan, County Meath

WRI was delighted to be asked to attend the launch of the newest addition to the group of Highfield Vet Clinics. We brought an information stand along to Navan and met with some wonderful, interested people.

We continue to nurture our relationships with vets and veterinary nurses.

Strategic partners, alliances, bodies, stakeholders etc

WRI continues to work with key government and local communities to promote the welfare and rehabilitation of wildlife.



Public Participation Network

WRI have been a member of the Meath Environment Network (MEN) Group of the Public Participation Network (PPN) since 2014. As a member, WRI attended virtual meetings of the Meath Environment Network during 2022.



Irish Environmental Network

As of November 2017, WRI became a member of the Irish Environmental Network (IEN), this body is made up of nationally active Irish Environmental NGOs. The group represent a broad range of environmental issues including everything from wildlife conservation to climate change.



WRI virtually attended the IEN Law Conference on The “challenges” of judicial review and governance in environmental matters in Ireland” The intent was to have a look back and a look forward at some key relevant developments in judicial review, and to consider them also in the context of the rule of law and environmental Human Rights. This is at a key moment when many policy and legislation changes are proposed, and in very challenging times including in terms of housing, energy, an interdependent climate and biodiversity crisis and current geopolitical events.



The Wheel

The Wheel is Ireland’s national association of community and voluntary organisations, charities and social enterprises. It is a representative voice and a supportive resource that offers advice, training, influence and advocacy for the sector. WRI has been a member of The Wheel since 2016 and makes use of their online training offerings on a regular basis.



Department of Agriculture, Food and the Marine

Meeting to facilitate collaboration with DAFF pathology dept regarding collection of samples and submitting cadavers to DAFF for post mortem examination.



Wildlife Rewilding

Dunsany Nature Reserve

Baron Randal Plunkett is the founder of Dunsany Nature Reserve which is Ireland's largest privately owned nature reserve and at present Ireland's only recognized large scale rewilding project.

WRI developed a very positive partnership with Randal in 2021 resulting in some fantastic enclosures being constructed on his land to help with the rehabilitation of wildlife that came through WRI’s hands; otters, foxes, hedgehogs and raptors.



Irish Rehabilitators

With WRI being unable to open our doors to wildlife casualties, other rehabilitators nationwide were getting a huge number of calls once again. WRI volunteers continued to monitor emails and responded with advice or referral as required when we received emails regarding injured wildlife.

We also responded positively to requests for assistance and provided food and equipment to various rehabilitators.

We were delighted to assist a local rehabilitator with 5 baby red squirrel kits by providing food, equipment and setting up a soft release enclosure.



PAW Ireland

WRI has been a member of PAW Ireland since its inception in 2020. We are very concerned about the number of wildlife crimes being committed in Ireland and work hard to do what we can to reduce it.

WRI believe that awareness raising is crucial and in turn will increase reporting, hopefully leading to investigations and ultimately to convictions that serve as a deterrent to others.



Veterinary professionals

WRI provide advice to vets throughout the country via email enquiries and if we can't help them ourselves we put them in touch with our UK wildlife vet contacts as required.

Veterinary & Research Board of Directors Subcommittee

Recognition of the implications of the EU and National controls on the use of Antibiotics and Anthelmintics for the treatment of wildlife is ongoing.

While the restrictions do not currently affect their use in wild animals there will be controls in the future which will be adhered to.



The pandemic of Highly Pathogenic Avian influenza (H5N1) during 2022 and 2023 which has caused the deaths of thousands of wild birds in Ireland has emphasised the importance of developing appropriate biosecurity measures at a new hospital site. HPAI viruses are of concern not only to birds but also to humans because they pose a potential risk of a pandemic. Members of the board have been regularly updated on national developments relating to the H5N1. It is hoped that supporting the provision of isolation facilities for sick birds that will be submitted to the new hospital will continue to be committed to by DAFM as this support has been stymied by the need to move to a new site.



Oberstown

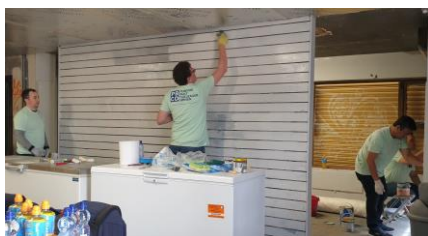
After visiting the youth detention centre in Oberstown, Co Dublin and chatting to the young people there, we thought that our mealworm farming might be of interest and have set up a mealworm farm for them and plan to deliver this to them so they can start 'farming' themselves to feed the local birds and provide food for our wildlife casualties when we get up and running again.



Corporates / CSR

Convergent Ireland

A team of c. 20 staff from the company 'Convergent' came out to help us in Mornington for a long and highly productive day. We provided a presentation on our work and they painted the entire interior and exterior of the house.



They also installed CCTV cameras in the semi-outdoor wildlife enclosures so the animals can be monitored by staff and potentially in future also viewed by the public remotely without disturbance to the animals.

Wildlife will often display different behaviours; i.e. hiding pain, when being overtly monitored to that when they believe they can't be seen.

Wildlife Crime Prevention



Wildlife Crime awareness raising forms a significant part of WRI's work. We dedicate time and resources to awareness raising as we believe this is crucial in the fight against wildlife crime. Unless the public are aware that some activities are not just unpleasant but also potentially illegal, there will always be under reporting of incidents. To this end...

-Wildlife Crime formed half of the theme/talks at our 2022 conference.

-We designed a wildlife crime pull up banner to be used at our events.

-Promoting the PAW Ireland App continues to be a high priority so we created a QR code to add to presentations/literature to facilitate people downloading the App.

-WRI has been an active member of PAW Ireland since 2020. We attended virtual PAW Ireland meetings during 2022.

-Wildlife Crime animation on PAW Ireland website.
Over 760 views. <https://youtu.be/AF5IOyKZ8Rk>



WRI Communications - Websites

REHAB RESOURCE

Resources and educational training events to improve wildlife welfare and rehabilitation

[Visit Rehab Resource »](#)



Wildlife Rehabilitation Ireland

www.wri.ie

WRI's main website offers rehabilitation resources. It covers standardised wildlife casualty processes, volunteer forms for rehabilitation establishments, wildlife career options, publications and further education - all of which aim to facilitate individuals actively involved in rehabilitation and/or conservation.

INJURED WILDLIFE

Useful and easy to follow information and instructions if you find an injured wild animal

[Visit Irish Wildlife Matters Website »](#)



Irish Wildlife Matters

www.irishwildlifematters.ie

WRI produced the wildlife first aid website 'Irish Wildlife Matters' (IWM) which was launched in May 2010. Its purpose is to address the lack of easily accessible information on Irish wildlife rescue and first aid. IWM provides an easily accessible, online overview of the rescue methods, medical treatment, rehabilitation and release procedures for the most commonly seen species of Irish wildlife casualties.

WILDLIFE CRIME

Advice on Recognising, Recording & Reporting a wildlife crime or suspicious incident

[Visit Wildlife Crime »](#)



Wildlife Crime Ireland

www.wildlifecrime.ie

In 2015 WRI, in association with retired NPWS ranger Val Swan, produced a new wildlife crime website and wildlife crime information brochure that were launched at the Irish Wildlife Crime Conference 2015. This website is a comprehensive site for the general public to get information on what to do and who to call for help in Ireland should a wildlife crime be suspected.

WILDLIFE HOSPITAL

WRI's project to build Ireland's first Wildlife Rehabilitation & Teaching Hospital and Nature Education Centre

[Visit Wildlife Hospital »](#)

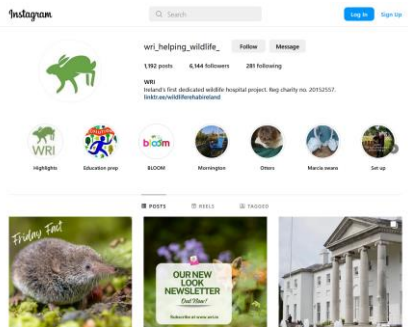


Wildlife Rehabilitation & Teaching Hospital

www.wriwildlifehospital.ie

A new Wildlife Hospital website has been constructed and has been very positively received with lots of new subscribers.

WRI Communications – Social media



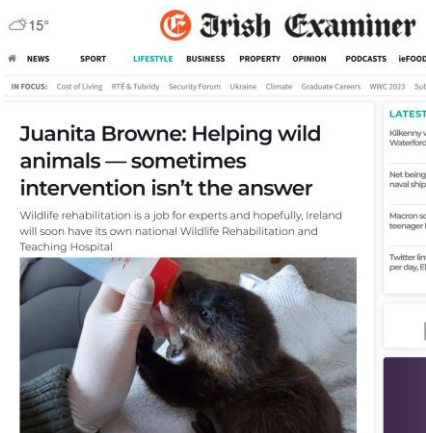
Communications: WRI e-newsletter

Communication with subscribers continues to be a priority for WRI. WRI sends out a monthly e-newsletter to a constantly growing mailing list, to-date over 2,200 subscribers.

Social Media

WRI has a large following on Facebook (nearly 10k) and Instagram (over 6k). We use these platforms to inform people on all things wildlife, crime, rehabilitation and the Wildlife Hospital project. The number of followers has grown exponentially since the opening of the Hospital in Garlow Cross. We post updates a few times/week.

WRI Communications – Publications



Media

Due to the temporary closure and move of the wildlife hospital in 2022 there was less press/media opportunities than the previous year. However, we interviewed on the local radio station LMFM on a few occasions and featured on their website.

<https://www.irishexaminer.com/lifestyle/outdoors/arid-40898132.html>
Juanita Browne: Helping wild animals — sometimes intervention isn't the answer

- *Wildlife rehabilitation is a job for experts and hopefully, Ireland will soon have its own national Wildlife Rehabilitation and Teaching Hospital...*

<https://www.meathchronicle.ie/2022/02/24/dream-come-true-as-wildlife-hospital-secures-new-premises/>

- *Dream come true' as wildlife hospital secures new premises*

<https://www.lmfm.ie/news/lmfm-news/mornington-new-base-for-wri-wildlife-hospital-with-plans-for-a-new-educational-and-visitors-centre/>
- *Mornington new base for WRI's wildlife hospital*

Ecolution RTE podcast

<https://www.rte.ie/radio/podcasts/22090561-ep-46-the-wri-wildlife-hospital/>

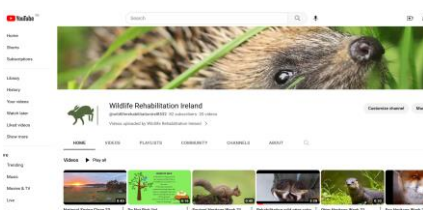
Connemara FM Great Outdoors, Thursday 14th April

Drogheda Leader, 18th Jan 2022

Drogheda Independent, April 2022
- *Students help to plant over 600 trees*

WRI youtube page

<https://www.youtube.com/@wildliferehabilitationirel8532>



WRI Governance



Governance Code

During 2022 the Board practiced the policies in place to adhere to the Charities Governance Code.

The AGM was held in hybrid fashion with half the board attending the meeting in Mornington and the others by zoom in Spring 2022.

WRI held regular monthly Board meetings online throughout 2022.

WRI engaged Whiteside Cullinan to do a full Audit of the WRI 2021 accounts, 2022 in progress.



WRI Personnel – Directors, Staff & Volunteers



Directors

As WRI grows, it needs an ever-broader skill set to guide it. Recruitment of new Directors is open and transparent and focused on creating a diverse and effective team who oversee the operations and contribute to the strategic direction of the charity.

Three new directors joined the Board in 2022, and three stepped down.

Rotation of Directors will mean some new faces at the Board meetings including a new Chairperson.

Staff

Due to the change of WRI circumstances, only one staff member was employed by the organisation in 2022.

WRI Team

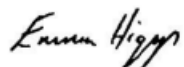


WRI have been extremely fortunate to have found an extraordinarily dedicated team of volunteers who met on a weekly basis to continue WRI's work on fundraising, accounts, protocols, procedures, education, building, cleaning, maintenance, events, media, design and IT. We would like to thank these individuals wholeheartedly for their continued support.

Wildlife Rehabilitation Ireland
PROFIT AND LOSS ACCOUNT
 for the financial year ended 31 December 2022

	Notes	2022 €	2021 €
Turnover		49,506	232,092
Cost of sales		(5,884)	(37,373)
Gross profit		43,622	194,719
Administrative expenses		(32,542)	(104,004)
Profit before taxation		11,080	90,715
Tax on profit		-	-
Profit for the financial year		11,080	90,715
Total comprehensive income		11,080	90,715

Approved by the board and signed on its behalf by:



Emma Higgs
Director



Aidan Lynch
Director

Wildlife Rehabilitation Ireland

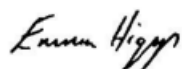
BALANCE SHEET

as at 31 December 2022

	Notes	2022 €	2021 €
Fixed Assets			
Tangible assets	7	110,981	37,702
Current Assets			
Other Assets		8,711	-
Cash and cash equivalents		56,900	140,335
Creditors: amounts falling due within one year	8	(20,657)	(2,173)
Net Current Assets		44,954	54,141
Total Assets less Current Liabilities		155,935	54,141
Reserves			
Retained surplus		155,935	54,141
Equity attributable to owners of the company		155,935	54,141

The financial statements have been prepared in accordance with the provisions applicable to companies subject to the small companies' regime and in accordance with FRS 102 "The Financial Reporting Standard applicable in the UK and Republic of Ireland", applying Section 1A of that Standard (the SORP) is issued by the Charity Commission and the Office of the Scottish Charity Regulator in their role as the joint SORP making body, recognised by the Financial Reporting Council.

Approved by the board and signed on its behalf by:



Emma Higgs
Director



Aidan Lynch
Director

Our full Statutory Accounts are available on our website www.wri.ie

A collage of four images showing wildlife rescue efforts. The top left shows two kestrels. The top right shows a large brown mammal, possibly a badger. The bottom left shows a small bird. The bottom right shows a small mammal, possibly a rabbit. In the center is a green diamond-shaped logo with a paw print icon and the text "Kildare Wildlife Rescue".

Irish Environmental Network
MEMBER | Part-funded by IEN



Wildlife Rehabilitation Ireland exists to promote wildlife rehabilitation, improve wildlife welfare and conservation in Ireland.

